



- July, 2011, 7 killed and dozens injured as severe storm strikes Indiana State Fair

- 1995, 10,000 festival attendees in Ft. Worth pummeled by baseball sized hail

- July, 2011, 14 killed and over 140 injured when severe storm hits concert in Belgium

***Don't let your event be added to this list!!***



ILCHASE has the tools and know-how to be on-site and advise you when severe weather is occurring near your event.

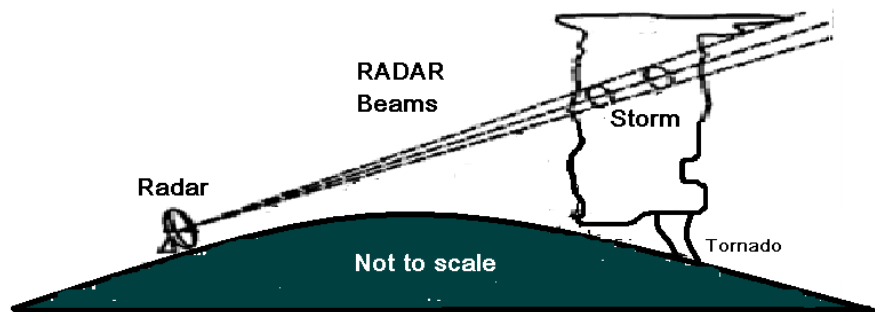


Each member of ILCHASE has over a decade of experience with severe weather.

# ***Let's get some eyes on that storm!***

**Your event is too important.  
Don't just trust radar on the Internet!!**

*Fact: Weather radar is an important tool for tracking storms but is limited and cannot fully determine a storm's strength.*



**Weather Radar cannot see weather on the ground**

***ILCHASE has the ability to put team members in front of a storm threatening your event and observe it in whole in real time.***



*With years of experience tracking and observing severe weather, our team can monitor storm chaser activity and storm spotter reports while you concentrate on your event.*

## **Other benefits of having ILCHASE @ your event:**

- Our team meteorologist and our trained storm spotters can help instruct your staff on severe weather.
- The ILCHASE Mobile Operations & Observation Command Housing (.M.O.O.C.H.) can provide backup power should weather interrupt electrical service
- The M.O.O.C.H. vehicle has satellite uplink capability for independent IP phone and Internet connectivity in case of both cell and land line service failure.

To find out more about having the ILCHASE team at your event, contact them at <http://www.ilchase.org> or [info@ilchase.org](mailto:info@ilchase.org). 815-252-6383